

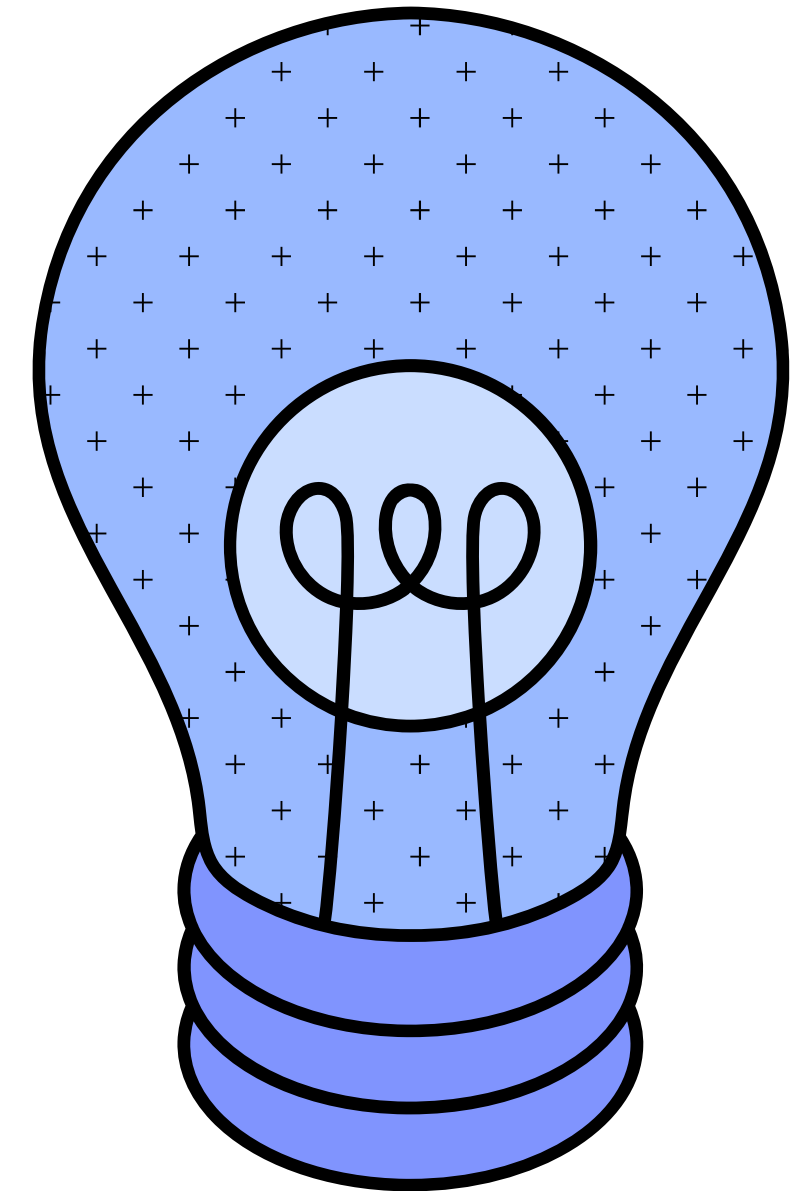


AI PARENT WORKSHOP

Let's talk about the future

“We need technology in every classroom and in every student and teacher’s hand, because it is the pen and paper of our time, and it is the lens through which we experience much of our world.”

David Warlick



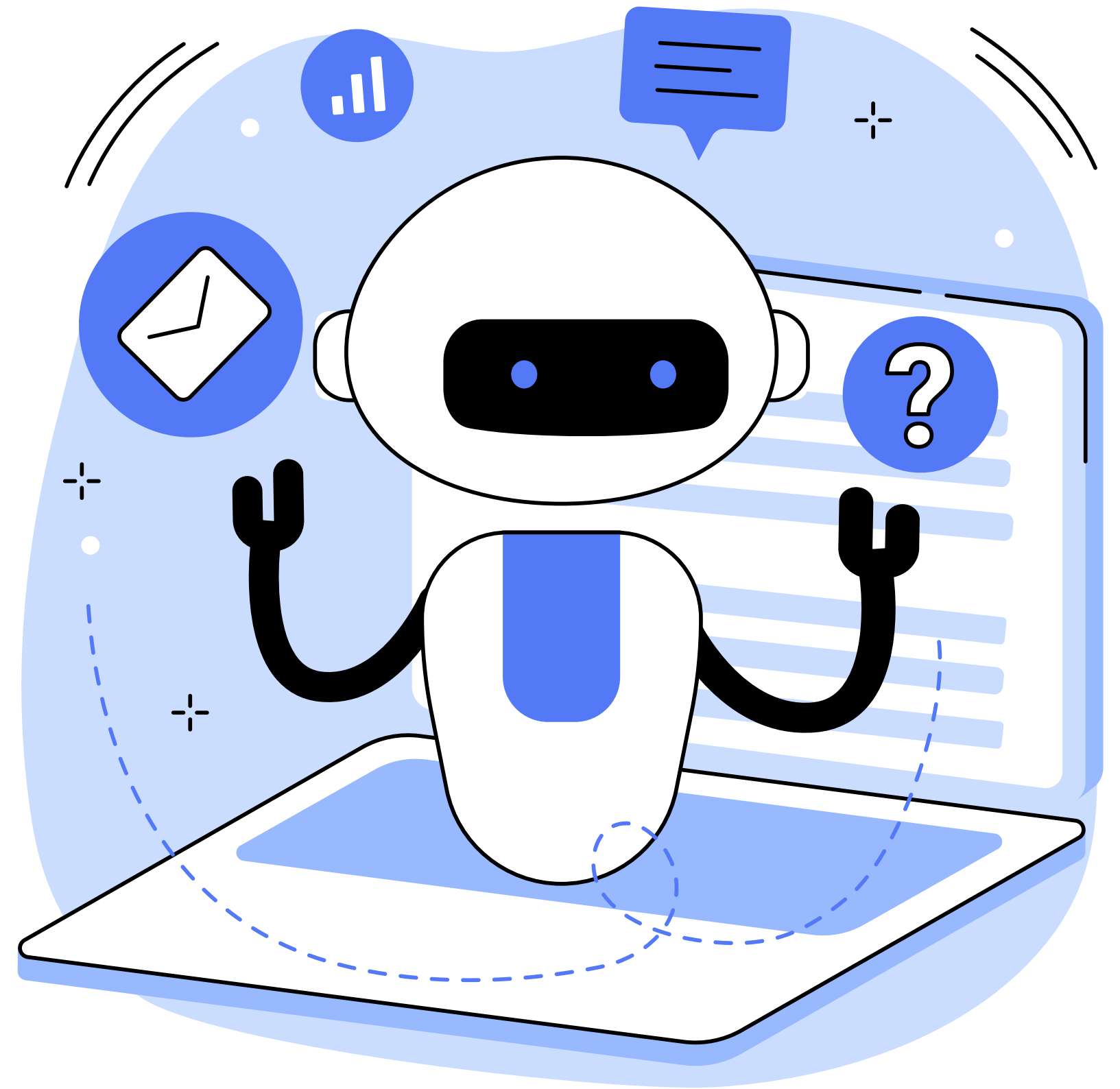
CONTENTS



- 1** What is Artificial Intelligence?
- 2** Current feelings about AI
- 3** How are we using AI at FPS?
- 4** AI tools for learning
- 5** FPS AI Policy
- 6** Why is teaching AI so important?
- 7** Q&A + Century Tech and SeeSaw

WHAT IS ARTIFICIAL INTELLIGENCE?

Artificial Intelligence (AI) is technology that enables machines to perform tasks that typically require human intelligence.



WHAT'S AI ALREADY USED FOR?

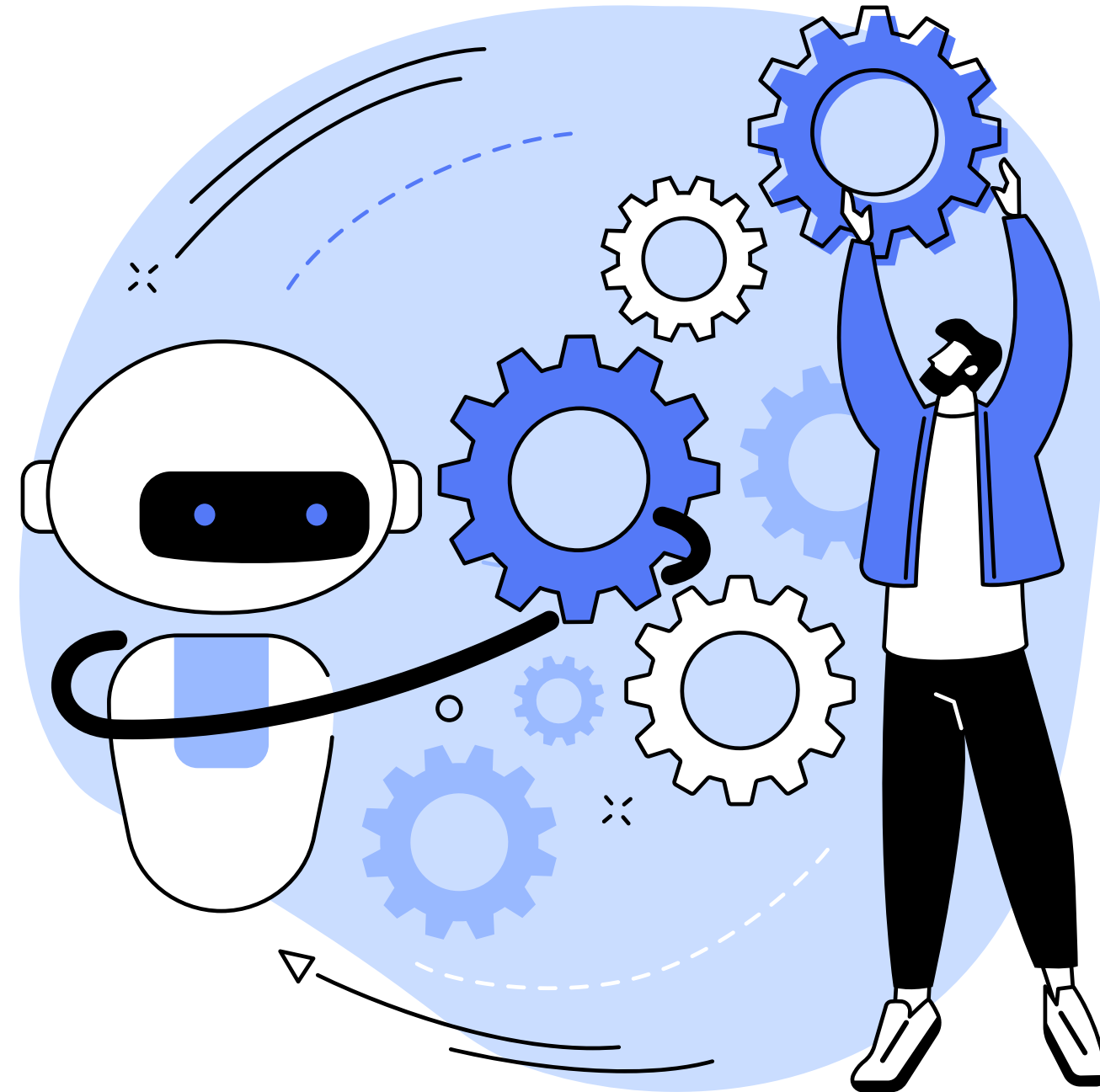
Facial recognition

Voice assistants

Predictive Text

Online shopping recommendations

Smart home devices



Google search

Navigation apps

Support chatbots

Netflix recommendations

Social media feeds

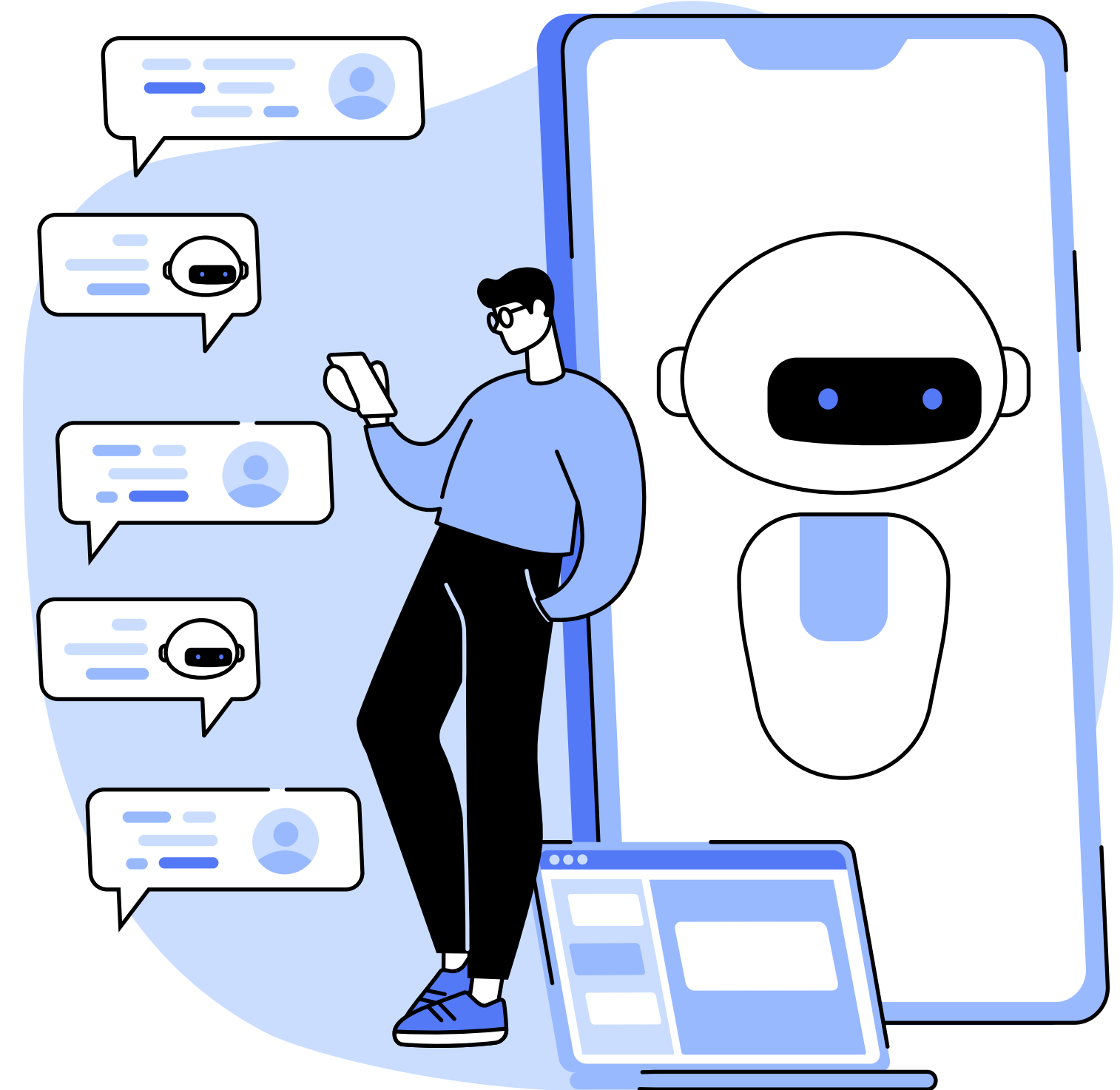
CURRENT THOUGHTS AND FEELINGS ABOUT AI...



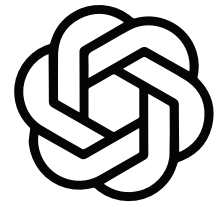


HOW ARE WE USING AI AT FPS?

- 1** AI-driven educational software and platforms are used to create personalised learning paths for each student. These systems adapt content and difficulty based on individual progress and needs.
- 2** AI-generated images and stimuli are used to offer endless inspiration, helping children explore their creativity and generate new ideas.
- 3** Using AI tools to offer tailored feedback and guidance, allowing children to refine their skills and elevate the quality of their work.



AI TOOLS FOR LEARNING



Chat GPT

Communication,
learning & research



Century Tech

Personalised learning
pathways



Bing Image Creator

Image generation



MagicSchool.ai

Provides feedback for
students to up level work



Looka

Image, brand and logo
generation



Canva

Generates images,
designs and
presentations



TT Rockstars

Adapts to each child's
individual needs



Perplexity

Powerful search engine
for research, discovery
and sharing

Create a UAE flag design using UAE flag colours and landmarks from Dubai

 14

 Create

Surprise Me

Explore ideas

Creations

 Help



FPS AI POLICY

At **FPS**, we are committed to upholding the highest standards of ethics and integrity in the use of AI. Our foremost priority is the well-being, privacy, and security of our students. We teach responsible AI usage and promote digital literacy, creating a safe and respectful online environment where every child can learn and thrive.

Artificial Intelligence (AI) Policy

This policy outlines the principles, guidelines, and procedures governing the use of Artificial Intelligence (AI) at GEMS FirstPoint School. AI has the potential to enhance the quality of education, streamline administrative processes, and improve learning outcomes. However, its implementation must be conducted responsibly, ethically, and in a manner that protects the rights and wellbeing of students and staff.

The intentions of this policy are:

- To ensure that AI technologies in schools are used for educational and administrative purposes that align with the school's mission and values.
- To promote transparency, fairness, and accountability in the deployment of AI technologies.
- To provide guidance on ethical considerations surrounding the use of AI in educational settings.

Responsible Use

- AI systems are used to enhance education, automate administrative tasks, and support decision-making, with a focus on improving educational outcomes and experiences.
- The use of AI for surveillance, profiling, or any other purpose that infringes on individual privacy rights is strictly prohibited.
- AI tools are designed to be accessible and inclusive, ensuring that all students and staff can benefit from their use.

Transparency and Accountability

- GEMS FirstPoint provides clear and understandable information about the use of AI educational programs.
- GEMS FirstPoint regularly assesses and evaluates the effectiveness, fairness, and impact of AI systems.

Ethical Considerations

- Ethical guidelines have been established between all stakeholders.
- Training has been provided for students, staff, and parents regarding ethical use of AI in education, especially with regards to plagiarism.



Personal Development

- Staff and educators have received training and professional development opportunities to understand AI systems and their applications.
- Teachers are encouraged to incorporate AI technologies into their teaching practices when appropriate.

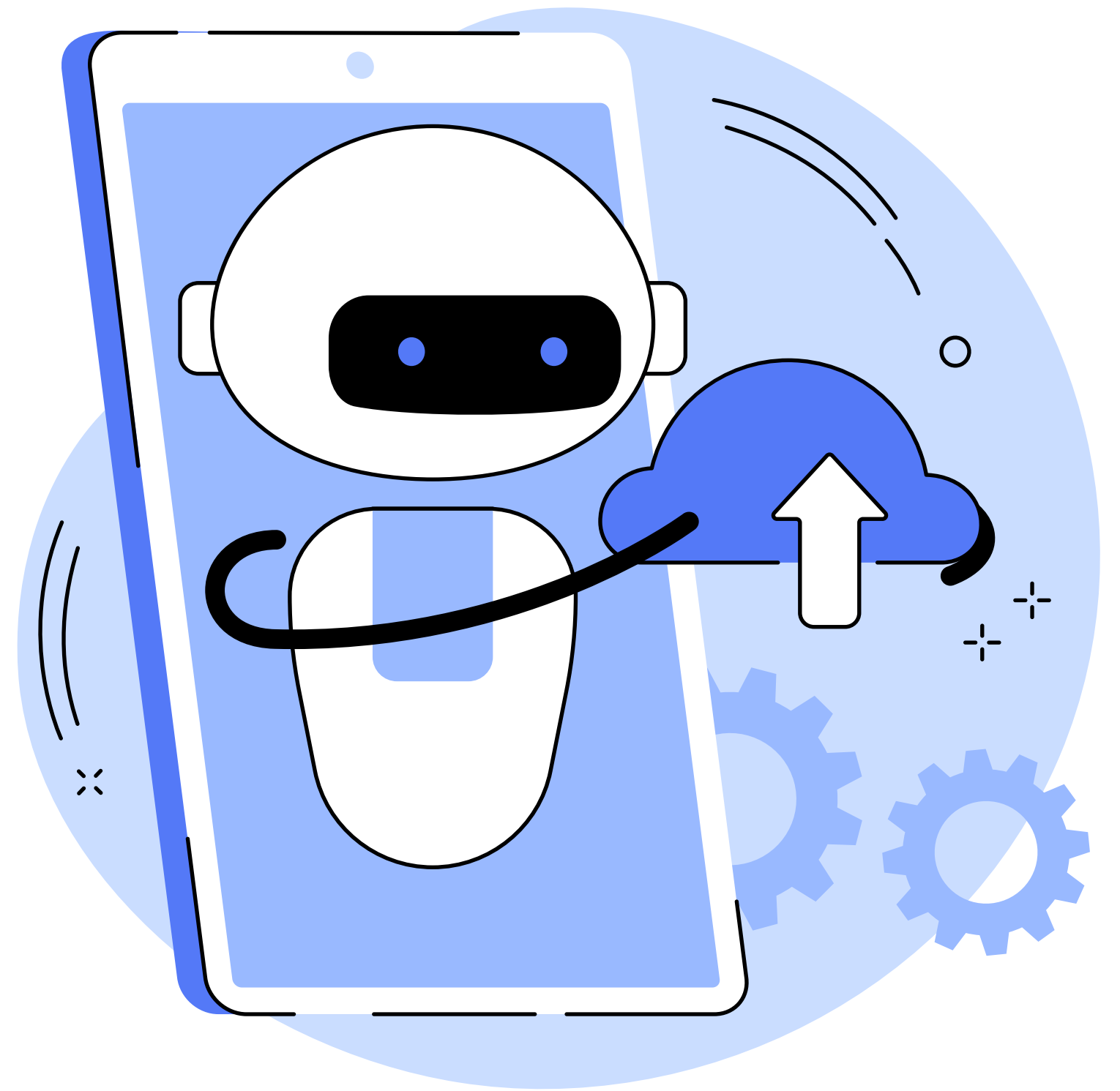
Review and Revision

This policy will be reviewed annually and updated to align with advancements in AI technology, changes in laws and regulations, and evolving best practice.



WHY IS TEACHING ABOUT AI SO IMPORTANT?

Teaching AI in primary schools is crucial for preparing the next generation for a technology-driven world. It helps students develop problem-solving skills, critical thinking, and digital literacy from a young age, setting a strong foundation for their future careers. Additionally, AI education fosters innovation and equips students to adapt to an evolving job market, ensuring they are well-prepared for the challenges and opportunities of the 21st century.





TEACHING AND LEARNING WITH AI TECHNOLOGY

- **PERSONALISED LEARNING:** AI TAILORS INSTRUCTION TO INDIVIDUAL STUDENTS, ADJUSTING CONTENT AND PACE TO MEET THEIR SPECIFIC NEEDS.
- **ADAPTIVE CURRICULUM:** AI ALLOWS FOR FLEXIBLE, DATA-DRIVEN CURRICULA THAT CAN INCORPORATE THE LATEST EDUCATIONAL TRENDS AND UPDATES.
- **TECHNOLOGY INTEGRATION:** AI ENVIRONMENTS EMBRACE DIGITAL TOOLS AND RESOURCES, PROMOTING INTERACTIVE, TECH-ENHANCED LEARNING EXPERIENCES.

OPPORTUNITIES

We would love to hear from **FPS** community contacts with connections to AI and tech development, who might be interested in sharing ideas and providing opportunities for our learners.

If you are interested, please contact:
r.odonnell_fps@gemsedu.com

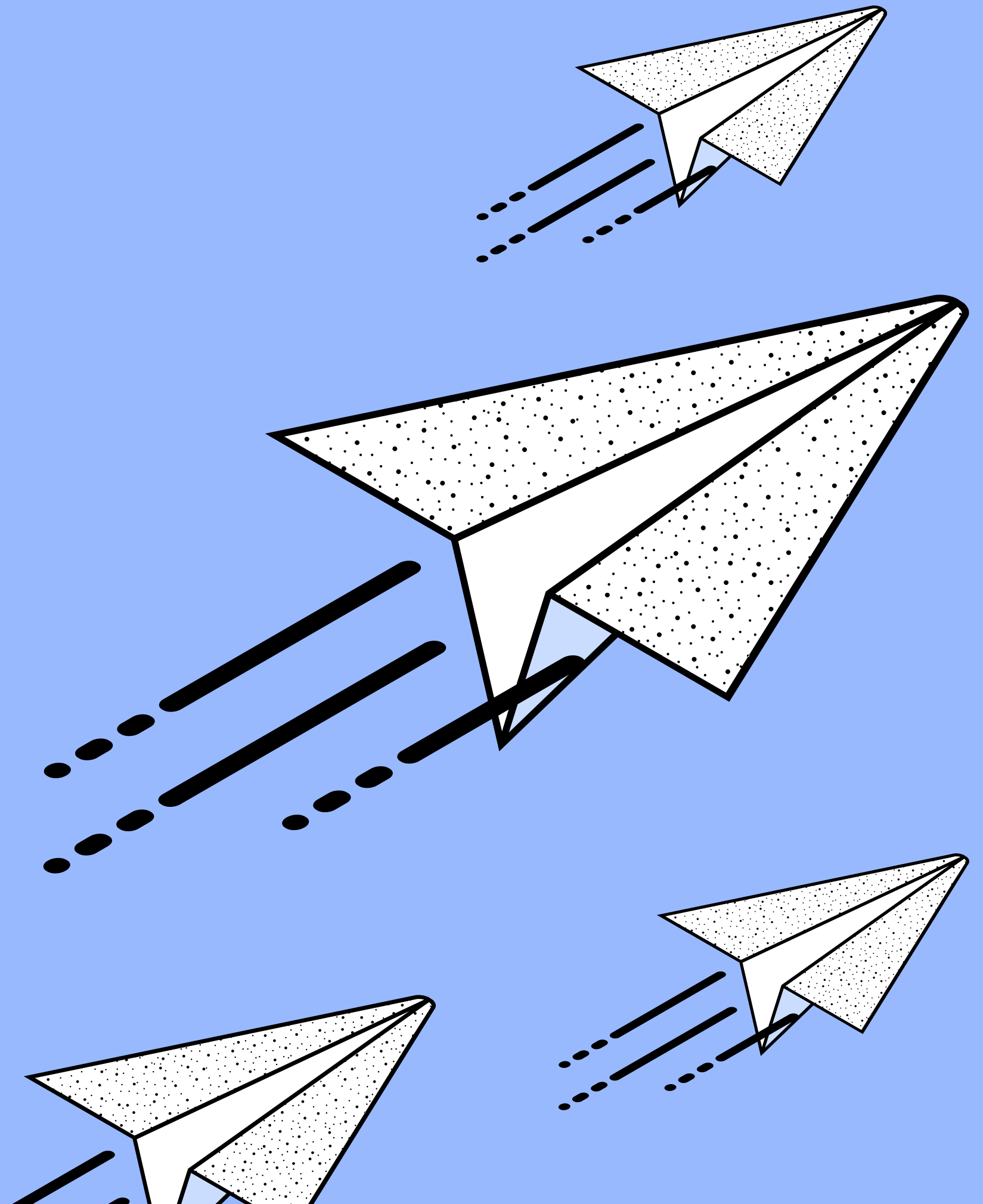


DO YOU HAVE ANY QUESTIONS?

AI

Century Tech

SeeSaw





THANK YOU FOR LISTENING!