



Meet the Primary Leadership Team



Mr Barrett
Head of Primary



Mrs Brannock
(nee Olley)
Deputy Head of
Primary



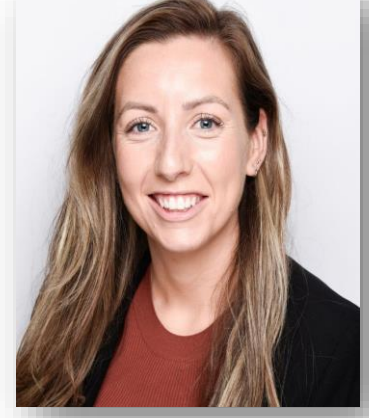
Miss Gallone
Assistant Head of
Primary



Mrs Nami
Assistant Head of
Primary



Miss Jones
Assistant Head of
Primary



Mrs Mead
Assistant Head of
Primary

Education Platforms in Primary



Years 1 – 6



Years 1 – 6



Years 2 – 6



Year 1



Nursery, FS1 and FS2



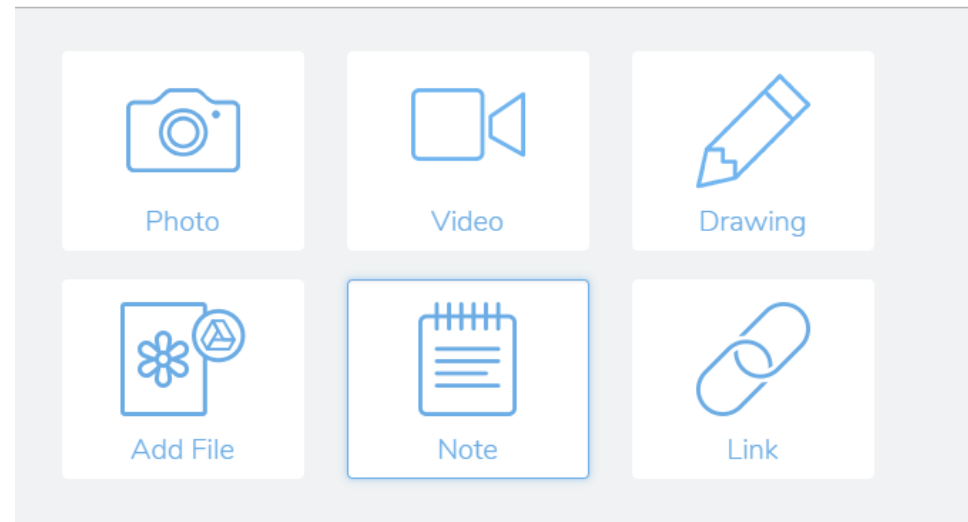
Year 1

Seesaw

Seesaw is an online learning platform that enhances student engagement. Teachers upload educational content and empower students to create, reflect, share, and collaborate in order to achieve various learning objectives. Students demonstrate their understanding using a variety of media such as photos, videos, drawings, text, PDFs and links. Additionally, students can utilise voice recordings to respond to next steps in learning. As parents, you will have access to the learning materials posted on Seesaw through their child's family account.



Post To Student Journal



CenturyTech

Century is an AI-driven online learning platform designed to personalise learning materials to meet students' individual needs. At FPS, Century is utilised as part of our home learning provision as well as in the classroom to support and enhance learning for students in Year 2 and above. Leveraging its AI capabilities, Century crafts individualised education plans for every student, personalised to challenge students of all abilities, ensuring each student receives targeted support and appropriate levels of challenge.



CENTURY



English



Maths



Science

<https://www.century.tech/>

*please use google chrome to access CenturyTech



TimesTables Rockstars & Numbots

Times Tables Rock Stars is a carefully sequenced programme of daily times tables practice. Each week focuses on a specific times table, with a recommended consolidation week for reinforcing recently practiced tables. At FPS, we host a variety of Times Tables Rockstars competitions and challenges to enhance engagement and foster students' mental arithmetic skills and quick recall abilities.



NumBots incorporates effective teaching methods to guide children from relying on finger counting to confidently adding and subtracting two-digit numbers. Specifically designed for Key Stage 1 (KS1) students, NumBots supports KS1 students in developing understanding, recall and fluency in mental addition and subtraction, so that they move from counting to calculating.





EducationCity

EducationCity provides engaging online educational content for students, covering a range of subjects and topics. At FPS, EducationCity is integrated into both home learning and classroom activities for Year 1 students. The interactive resources cover foundational skills in phonics, English, maths, and science. Learning outcomes and resources are aligned to the Early Years Framework (EYFS) and the National Curriculum for England.

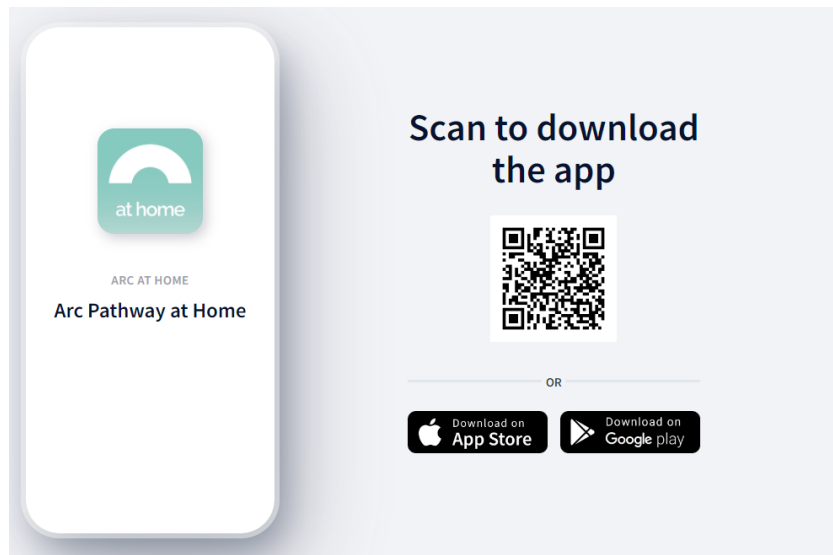
<https://go.educationcity.com/>





ArcPathway

Arc Pathway is our online learning journey designed for our Early Years Foundation Stage (EYFS) students. In EYFS, each student has a personal online learning journey, whereby teachers record photos, observations, and comments in alignment with the Early Years Foundation Stage Framework. Arc Pathway provides a comprehensive overview and closely tracks progress across all seven areas of learning. In addition to viewing observations and teacher contributions, parents are able to share special moments and achievements that occur outside of school via the platform. This supports with building a holistic profile of your child's learning journey.





Teams

Microsoft Teams is a digital platform that allows communication and collaboration in an online environment. In Primary at FPS, students will be added to a their class team, which will be used only if we need to transition to online learning. Teachers can host live lessons, share resources, and communicate directly with students and parents. This ensures that learning continues smoothly, even if we can't be in the classroom. While we hope to remain in-person, having this platform set up in advance will help us be prepared for any situation. If needed, we will provide guidance on how to use Teams effectively, ensuring that all parents and students feel confident navigating the platform. Please note that all parents should have received login credentials, if this is not the case, please email our Data Support Team on support_fps@gemsedu.com





Questions