



# Welcome to Year 7 2024/2025 Coffee Morning



**‘We delight in the beauty of the butterfly but rarely admit the changes it has gone through to achieve that beauty.’**



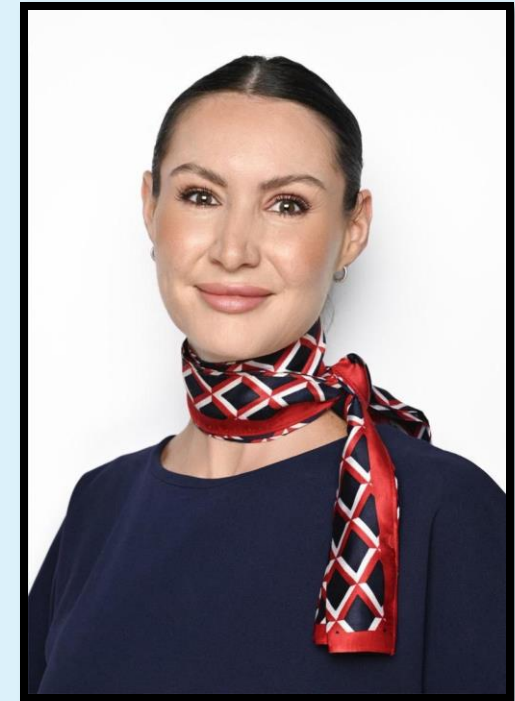
# The Secondary Transition Team



**Tom Owen, Head of Year 7**



**Erika Kennedy, Assistant Principal**



**Roxanne Van Der Maat, Parent Relations Exec**



# Inclusion & Support



**Regan Ferreira, Head of Inclusion**



**Michelle Watson, Inclusion Teacher – Year 4-8**



**Rachael Gabel, School Counsellor – Primary/Year 7**



**RHYS HEADLEY**  
HEAD OF  
SECONDARY

[r.headley\\_fps@gemsedu.com](mailto:r.headley_fps@gemsedu.com)



**LAURA NULTY**

ASSISTANT HEAD TEACHER  
[l.nulty\\_fps@gemsedu.com](mailto:l.nulty_fps@gemsedu.com)



**ERIKA KENNEDY**

ASSISTANT PRINCIPAL  
[e.kennedy\\_fps@gemsedu.com](mailto:e.kennedy_fps@gemsedu.com)



**NATHAN JACKSON**

ASSISTANT HEAD TEACHER  
[n.jackson\\_fps@gemsedu.com](mailto:n.jackson_fps@gemsedu.com)



**LEWIS HAMMILL**  
DEPUTY HEAD OF  
SECONDARY

[l.hammill\\_fps@gemsedu.com](mailto:l.hammill_fps@gemsedu.com)



**SARAH BARR**

ASSISTANT HEAD TEACHER  
[s.barr\\_fps@gemsedu.com](mailto:s.barr_fps@gemsedu.com)



**SAMERA DHANSEY**

ASSISTANT HEAD TEACHER  
[s.dhansey\\_fps@gemsedu.com](mailto:s.dhansey_fps@gemsedu.com)





# Year 7 Team



**TOM OWEN**  
HEAD OF YEAR 7  
HUMANITIES TEACHER  
t.owen\_fps@gemsedu.com



**ANEESA MAHMOOD 7.1**  
Science Teacher  
a.mahmood\_fps@gemsedu.com



**SHAUNA SOUTHAM 7.2**  
Art Teacher  
s.southam\_fps@gemsedu.com



**MARI EVANS 7.3**  
Maths Teacher  
m.jonesevans\_fps@gemsedu.com



**EMILY JAMES 7.4**  
English Teacher  
e.james\_fps@gemsedu.com



**JULIE ANEES 7.5**  
Design Technology Teacher  
j.anees\_fps@gemsedu.com



**JESSICA MOSES 7.6**  
Drama Teacher  
j.moses\_fps@gemsedu.com



**ANDREW CARROLL 7.7**  
Maths Teacher  
a.carroll\_fps@gemsedu.com

# What information will we ensure is given to you?

- ✓ Timings of the school day
- ✓ Uniform expectations, inc. PE kit
- ✓ Equipment required
- ❖ Behaviour for learning principles
- ❖ Use of mobile phone policy
- ❖ Social time (breaks and lunches)
- ❖ Curriculum changes from Y6 to Y7
- ❖ The nature of tutor time
- ✓ Key points of contact in Year 7
- ❖ A 'buddy' for your child
- ✓ ECAs in secondary school
- ✓ Anecdotes and experiences from current Y7
- ✓ Feedback from parents/teachers/students and our actions to move forward
- ✓ Support from the Inclusion Team (SEN and EAL)
- ❖ Home Learning in Year 7
- ❖ Assessments in Year 7
- ✓ Movement around school

[@transition\\_fps@gemsedu.com](mailto:@transition_fps@gemsedu.com)

## ❖ Behaviour for learning principles

**No Opt  
Out**

**Questioning**

**100%**

## ❖ Use of mobile phone policy





- ❖ A day in the life of Year 7
  - ❖ Curriculum
  - ❖ Social time
  - ❖ PE
  - ❖ Home Learning
  - ❖ Assessments
  - ❖ Buddy System



# Home Learning

LOG IN GUIDE	STUDENT ACCESS CODE
<ol style="list-style-type: none"><li>1. Go to <a href="http://www.classcharts.com/student/login">www.classcharts.com/student/login</a></li><li>2. Enter your student access code, remember to keep this safe!</li><li>3. Click Log-in!</li></ol>	<b>XZPVC68SFO</b>



classcharts.com/student/login

ENGLISH (UK)

ClassCharts Part of tes

AWARDS 2019 AWARDS 2017

FEATURES LOGIN

### Log in

Teacher Parent **Student**

Pupil code

Remember me

To log in and view your report you will need to enter the code provided to you by your teacher.

Log in with: \_\_\_\_\_

### Class Charts for students

#### I forgot my code

I am sorry but we cannot help with this and you will need to ask your school to provide you with a new code.

#### Quick Start Students guide

For additional information about Class Charts, please check out our



# How have our current Year 7 found transition to secondary school?



# Students Experience

- ❖ A special thank you to the following students:
  - ❖ Ann Safwat
  - ❖ Luke Satterly
  - ❖ Zoya Faraz 7.2
  - ❖ Celina Ahumuza Tusiime 7.2,
  - ❖ Addison Marshall 7.2
  - ❖ Farida Aamer 7.4

